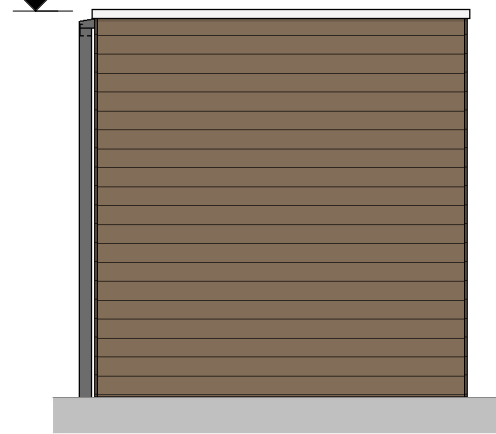


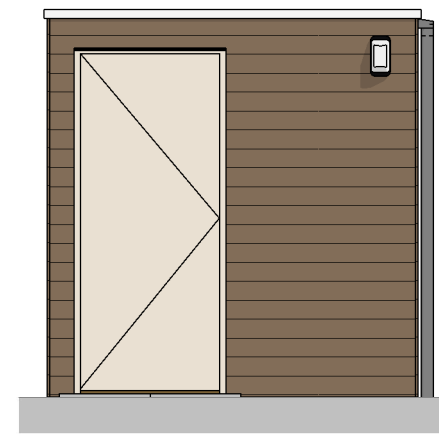
+2527 bk. dak = +2477 t.o.v. peil woning



Linkergevel



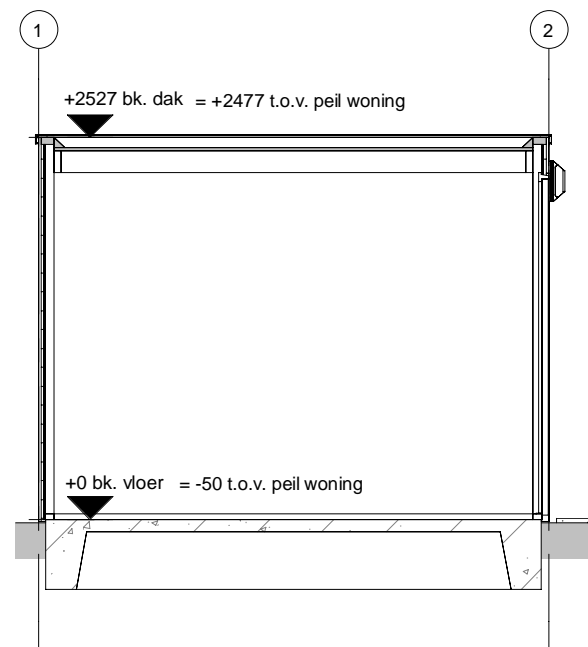
Voorgevel



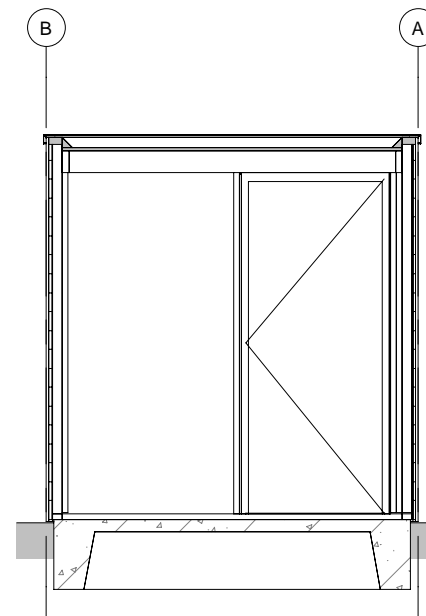
Rechtergevel



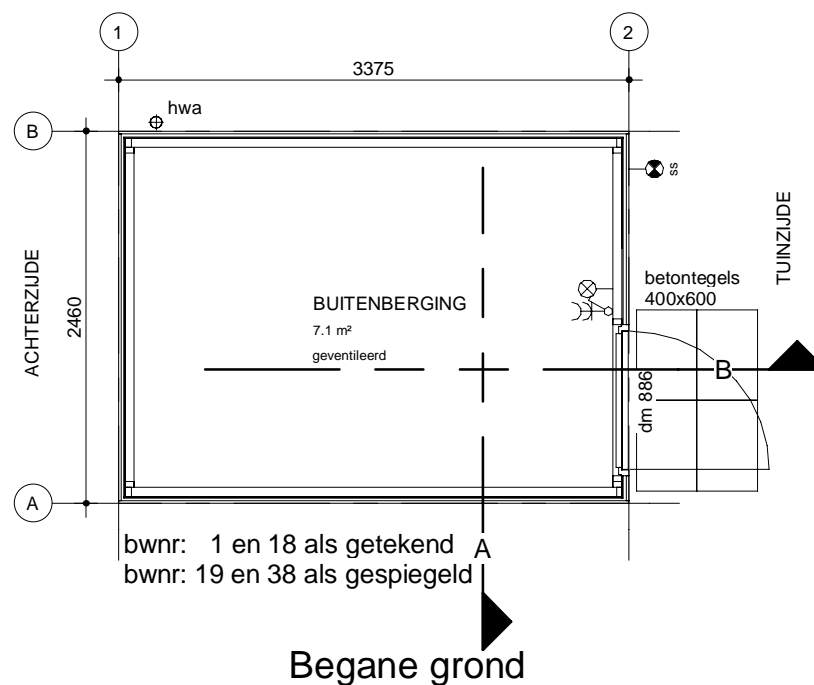
Achtergevel



Doorsnede B




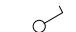


Doorsnede A



Begane grond

Renvooi installaties bergingen

Elektrotechnische installaties conform voorschriften NEN 1010

-  dubbele wcd + randaarde opbouw
-  enkelpolige schakelaar
-  wandlichtpunt
-  wandlichtpunt incl. armatuur met schemerschakelaar

Berging enkel